

BREA BEAD WORKS

VIOLET PANSY BRACELET



MATERIALS

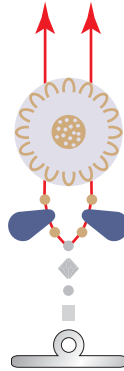
- ▷ Flower beads; 2-hole; 12mm [6 qty]
- ▷ Leaf beads; 6x10mm; top-drilled [12 qty]
- ▷ Dagger beads; 3x9mm [24 qty]
- ▷ Drop beads; 4x6mm [58 qty]
- ▷ Seed beads; 11° [1 color]
- ▷ Bicone crystals; 3mm [22 qty]
- ▷ Tubular crimp bead; 2x2mm [2 qty]
- ▷ Toggle clasp [1 qty]
- ▷ Flexible beading wire; .015" dia [2 feet]

TOOLS

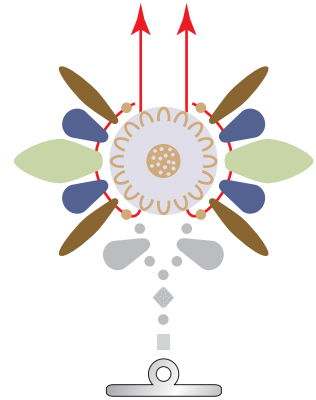
- ▷ Chain nose pliers
- ▷ Crimping pliers
- ▷ Wire Cutter



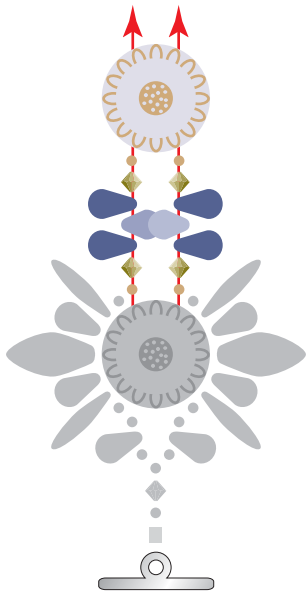
1. Start with two 1' pieces of flexible beading wire. String both wires on T-bar end of toggle and crimp with 2mm tubular crimp bead. With wires together string on seed bead, bicone crystal, and seed bead.



2. Separate wires and add to each a seed bead, drop bead, seed bead, and string through 2-hole flower bead.

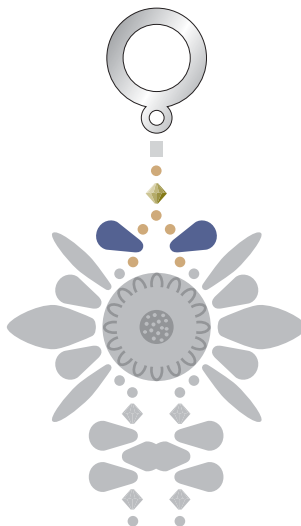


3. On each wire string on a seed bead, dagger bead, drop bead, leaf bead, drop bead, dagger bead, seed bead, and loop back through flower bead.



4. On each wire string on a seed bead, bicone crystal, 3 dagger beads, bicone crystal, seed bead, and string through 2-hole flower bead.

Repeat steps 3-4 until you reach desired length.



5. End bracelet by stringing on seed bead, drop bead, and seed bead on each wire. Then with wires together string on seed bead, bicone crystal, and seed bead. Crimp other end of toggle to finish.