

## BREA BEAD WORKS

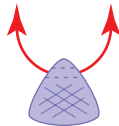
### TRILLION DROP EARRINGS

#### MATERIALS

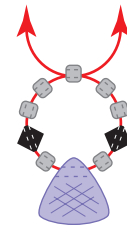
- ▷ Trillion cut cubic zirconia; 7mm [2 qty]
- ▷ 6mm crystal; round or bicone [2 qty]
- ▷ 4mm bicone crystals [4 qty]
- ▷ 3mm bicone crystals [12 qty]
- ▷ 11° seed beads [1 color]
- ▷ 2mm tubular crimp beads [4 qty]
- ▷ 3mm crimp covers [4 qty]
- ▷ 4-loop metal connector [2 qty]
- ▷ Headpins; 1" [2 qty]
- ▷ SoftTouch wire; .014" dia [1 foot]
- ▷ Earwires of your choice [1 pair]

#### TOOLS

- ▷ Wire Cutter
- ▷ Round nose plier
- ▷ Chain nose plier
- ▷ Crimping plier



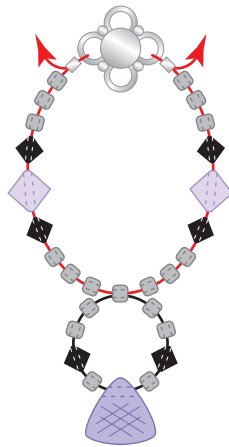
**1.** String on a trillion cut CZ on a 6" piece of SoftTouch wire.



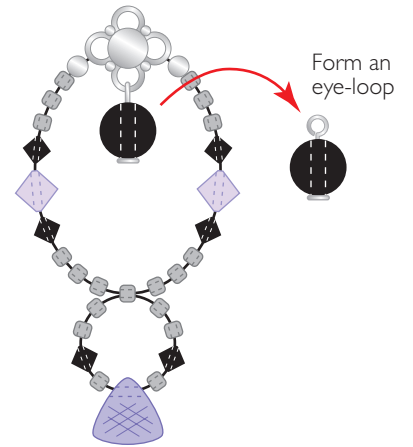
**2.** String on an 11° seed bead (SB), 3mm bicone crystal, and 2 SBs on each wire. Pass both wires through another SB, making sure to pass from opposite sides of the added SB.



**3.** String on 3 SBs, 3mm bicone, 4mm bicone, 3mm bicone, 3 SBs, and a 2mm tubular crimp bead to each wire.



**4.** String each wire end through the 4-loop connector side loops and pass back through the crimp bead. Make sure to loop wire in the same direction (back to front or front to back) so the wires do not twist. Crimp down the crimp bead using a "crimping plier". Do not crimp down with a chain nose plier. This will not crimp the bead small enough for the crimp cover to fit over the crushed crimp bead.



**5.** Cover crushed crimp bead with the crimp covers. Insert a 6mm crystal on a headpin and form an eye-loop and attach to the bottom loop of your connector. Attach earring to earwire of your choice. Repeat steps for your other earring.